

Flamingo mini

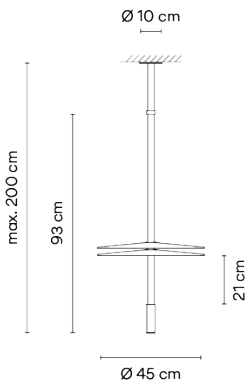
VIBIA

1575

Design By Antoni Arola

The hanging Flaming Mini lamps include two different translucent diffusers together with matching point lights featuring Led terminals to create attenuate and uniform lighting ambiances.

Model Sheet



Optional : Extra cable length
Min. quantity, upcharge and extra lead time
apply [EN]

Finish	11 Black NCS S 8500-N
LED temperature color	2700 K
Dimming	DALI / Casambi / Push; 1-10V
Installation type	Surface Canopy / Built-in XS

Materials	Body: Aluminum Shade: PMMA Diffuser: PC- Polycarbonate
Light source	2 x LED 3W 175mA E
LED	CRI>90 726 lm 124 2700 K
Driver	Constant Current 350 110~240 V V 50~60 Hz HZ IP20 Bi-volt 50-60Hz

Application	Hanging lamps
Packaging	2 Box 0.51 m x 0.51 m x 0.165 m Gross weight 5,5 Net weight 4 Vol. 0.0486

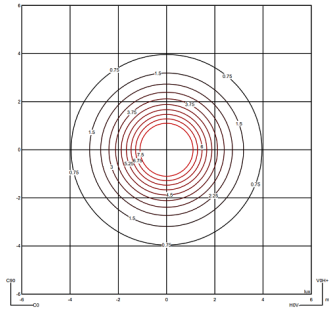
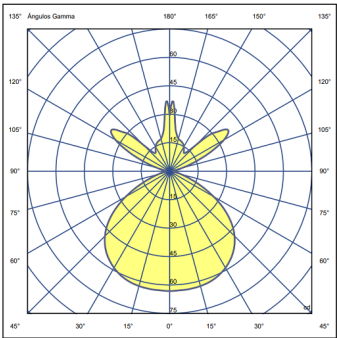
Lighting effect

General lighting

Lamp for general lighting that equally distributes the light in all directions.



Photometric Data



All of our products come with a five-year warranty. Check our legal terms at www.vibia.com/warranty

Vibia Lighting, S.L.U.

Office / Oficina
Progrés 4-6. 08850 Gavà. Barcelona, Spain.

International T +34 934 796 971
Spain / Portugal T +34 934 796 970

customer.service@vibia.com
vibia.com

Flamingo mini

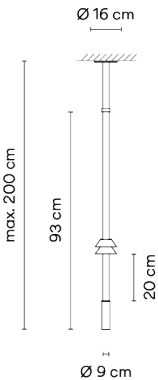
1580

Design By Antoni Arola

The hanging Flamingo Mini lamp features a silhouette of minimal dimensions offering a volumetric lighting and focal point towards a single point of light.

VIBIA

Model Sheet



Optional : Extra cable length
Min. quantity, upcharge and extra lead time apply [EN]

Finish	11 Black NCS S 8500-N
LED temperature color	2700 K
Dimming	Casambi / DALI / Push; 1-10V
Installation type	Built-in XS / Surface Canopy

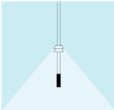
Materials	Body: Aluminum Shade: PMMA Diffuser: PC- Polycarbonate
Light source	2 x LED 3W 175mA E
LED	CRI>90 726 lm 124 2700 K
Driver	350 50~60 Hz HZ IP20 Bi-volt 50-60Hz

Application	Hanging lamps
Packaging	2 Box 1.25 m x 0.068 m x 0.068 m Gross weighth 4 Net weighth 3 Vol. 0.0111

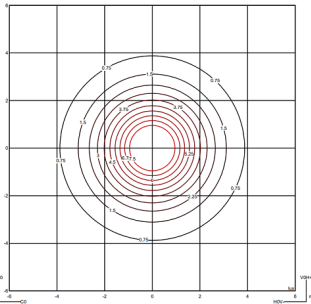
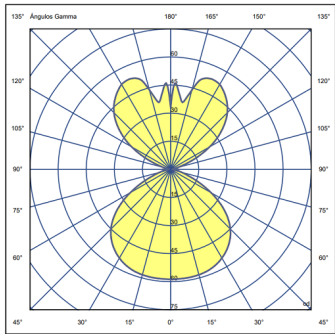
Lighting effect

General lighting

Lamp for general lighting that equally distributes the light in all directions.



Photometric Data



All of our products come with a five-year warranty. Check our legal terms at www.vibia.com/warranty

Vibia Lighting, S.L.U.

Office / Oficina
Progrés 4-6. 08850 Gavà. Barcelona, Spain.

International T +34 934 796 971
Spain / Portugal T +34 934 796 970

customer.service@vibia.com
vibia.com

Flamingo mini

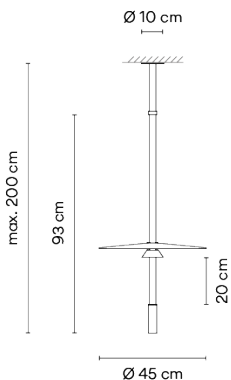
1585

Design By Antoni Arola

The Flamingo Mini lamp has two diffusers of different sizes that lend this suspended design an ephemeral and adaptable quality, the light fitting floats above our heads projecting gradations of light.

VIBIA

Model Sheet



Optional : Extra cable length
Min. quantity, upcharge and extra lead time
apply [EN]

Finish	11 Black NCS S 8500-N
LED temperature color	2700 K
Dimming	DALI / Casambi / Push; 1-10V
Installation type	Surface Canopy / Built-in XS

Materials	Body: Aluminum Shade: PMMA Diffuser: PC- Polycarbonate
Light source	2 x LED 3W 175mA E
LED	CRI>90 726 lm 124 2700 K
Driver	Constant Current 350 110~240 V V 50~60 Hz HZ <input type="checkbox"/> IP20 <input checked="" type="checkbox"/> Bi-volt <input checked="" type="checkbox"/> 50-60Hz

Application	Hanging lamps
Packaging	2 Box 0.51 m x 0.51 m x 0.165 m Gross weight 5,5 Net weight 4 Vol. 0.0486

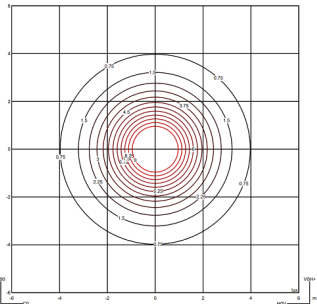
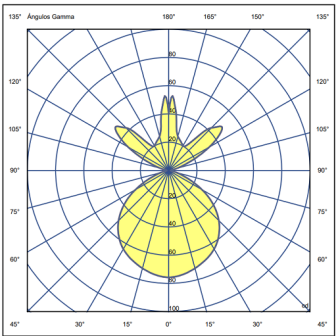
Lighting effect

General lighting

Lamp for general lighting that equally distributes the light in all directions.



Photometric Data



All of our products come with a five-year warranty. Check our legal terms at www.vibia.com/warranty

Vibia Lighting, S.L.U.

Office / Oficina
Progrés 4-6. 08850 Gavà. Barcelona, Spain.

International T +34 934 796 971
Spain / Portugal T +34 934 796 970

customer.service@vibia.com
vibia.com

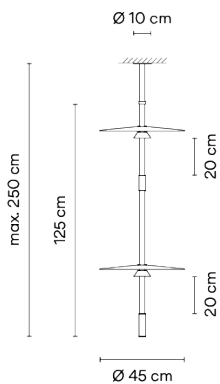
Flamingo mini

1590

Design By Antoni Arola

Flamingo Mini offers an attenuated lighting through its different translucent diffusers, this model invites users to choose between a variety of different configurations thanks to the three installation options.

Model Sheet



Optional : Extra cable length
Min. quantity, upcharge and extra lead time apply [EN]

Finish	11 Black NCS S 8500-N
LED temperature color	2700 K
Dimming	DALI / Push; 1-10V / Casambi
Installation type	Surface Canopy / Built-in XS

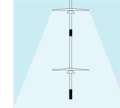
Materials	Body: Aluminum Shade: PMMA Diffuser: PC- Polycarbonate
Light source	3 x LED 3W 185mA E
LED	CRI>90 1152 lm 132 2700 K
Driver	Constant Current 350 110~240 V V 50~60 Hz HZ IP20 Bi-volt 50-60Hz

Application	Hanging lamps
Packaging	2 Box 0.51 m x 0.51 m x 0.165 m Gross weight 6.5 Net weight 5 Vol. 0.0502

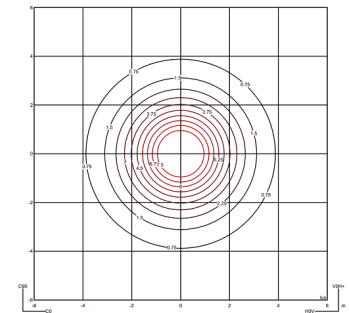
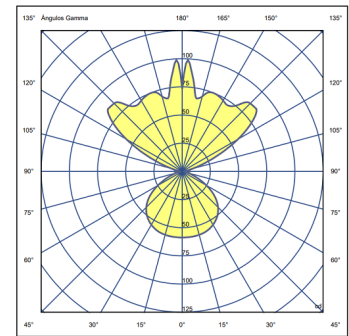
Lighting effect

General lighting

Lamp for general lighting that equally distributes the light in all directions.



Photometric Data



All of our products come with a five-year warranty. Check our legal terms at www.vibia.com/warranty

Vibia Lighting, S.L.U.

Office / Oficina
Progrés 4-6. 08850 Gavà. Barcelona, Spain.

International T +34 934 796 971
Spain / Portugal T +34 934 796 970

customer.service@vibia.com
vibia.com